



PROVIDING SAFETY SOLUTIONS WORLDWIDE

Safety Railing Solutions



- SOLUTIONS TO YOUR RAILING PROBLEMS
- SIMPLE TO DESIGN AND SPECIFY
- UNRIVALED TECHNICAL SUPPORT
- WORLD WIDE AVAILABILITY

CSI 05520
January 2009



KEE SAFETY has been building and designing railings and the components used for these structures for over 75 years. The simplicity in the design of these systems is due to the modularity of its parts. Whether you need to protect people, equipment or your on-site inventory, KEE SAFETY provides the most cost effective safe solutions to your barrier requirements. When you need a safe, reliable, durable and versatile barrier system, there is only one company to think of: KEE SAFETY.

Safety

KEE SAFETY railing systems not only meet but exceed the current safety requirements for maximum protection. Either in the factory, on the construction site, or along the ADA ramp, KEE SAFETY understands the requirements laid out in today's numerous safety bulletins: OSHA, IBC U.S. Coast Guard, Ontario Building Code, ANSI, Health and Safety, EU Directives & CDM Regulations to name just a few. As a market leader for over 75 years, KEE SAFETY regularly monitors safety standards and directives to insure the highest safety.

Quality

Quality is the overriding priority when working with KEE SAFETY. The components are TÜV certified for strength, manufacturing quality and consistency. The final design will be reviewed by our projects department with all of the applicable safety requirements.

Solutions

From simple protection for loading docks or safety walkways in factories, to safety barriers in aggressive coastal environments or the protection of road bridges and culverts, KEE SAFETY can provide the strategic integrated solution to meet, with absolute confidence, your safety requirements. Send us your drawing or sketch, or call us to survey your location and we can provide a safe, economical workable barrier solution.



durable galvanized finish requires no threading, welding or bolting to create pipe structures



high grade aluminum silicon magnesium alloy provide lightweight, corrosion resistant structures



barrier railing system designed to meet ADA (Americans with Disabilities Act) requirements



quick assembly safety railings available in straight, corner, and extension kits

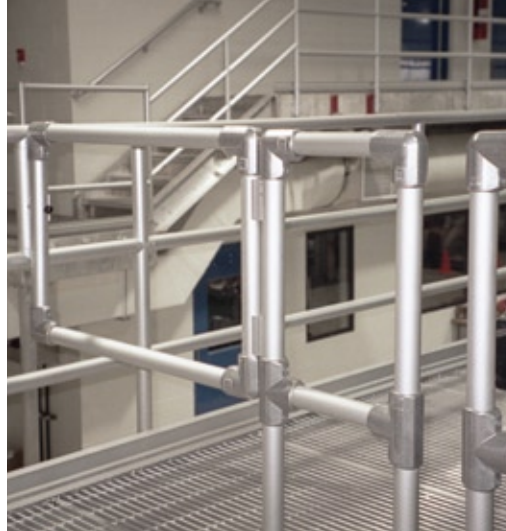


providing design, installation, and management of compliant safety barrier systems



Level/Ramps/Stairs

Whether your railing requirement is on a level surface, ramp, or even stairs, KEE SAFETY has the solution and components needed to solve your day to day safety issues. We can provide materials in galvanized iron or aluminum. A wide range of components and pipe sizes allows us to design to your specific situation. By utilizing an assembled system versus a fabricated/welded product, you save time in installation as well as overall cost savings.



ADA Compliance

To ensure architects, engineers, specifiers, builders and contractors satisfy the requirements of the American with Disabilities Act as well as state and local building codes, KEE SAFETY has an ADA railing system – Kee® Access. This system is specifically designed to give a smooth hand-rail gripping surface. Kee Access has been designed with versatility and speed of installation in mind and to make any facility readily achievable. While it is ideal to create new barriers, the system can also be used as a retrofit solution because it includes add-on components which allow a new handrail to be added onto an existing railing system.



Inline-Offset

For quick assembly of inline or offset railings, handrails and guardrails in any industry – KEE SAFETY has the perfect solution. From simple protection for loading bays, safety walkways in factories, safety barriers in aggressive coastal environments, or the protection of road bridges and culverts, KEE SAFETY railing solutions can be used with absolute confidence. The railing solutions are also reusable should you wish to dismantle or redesign your structure.

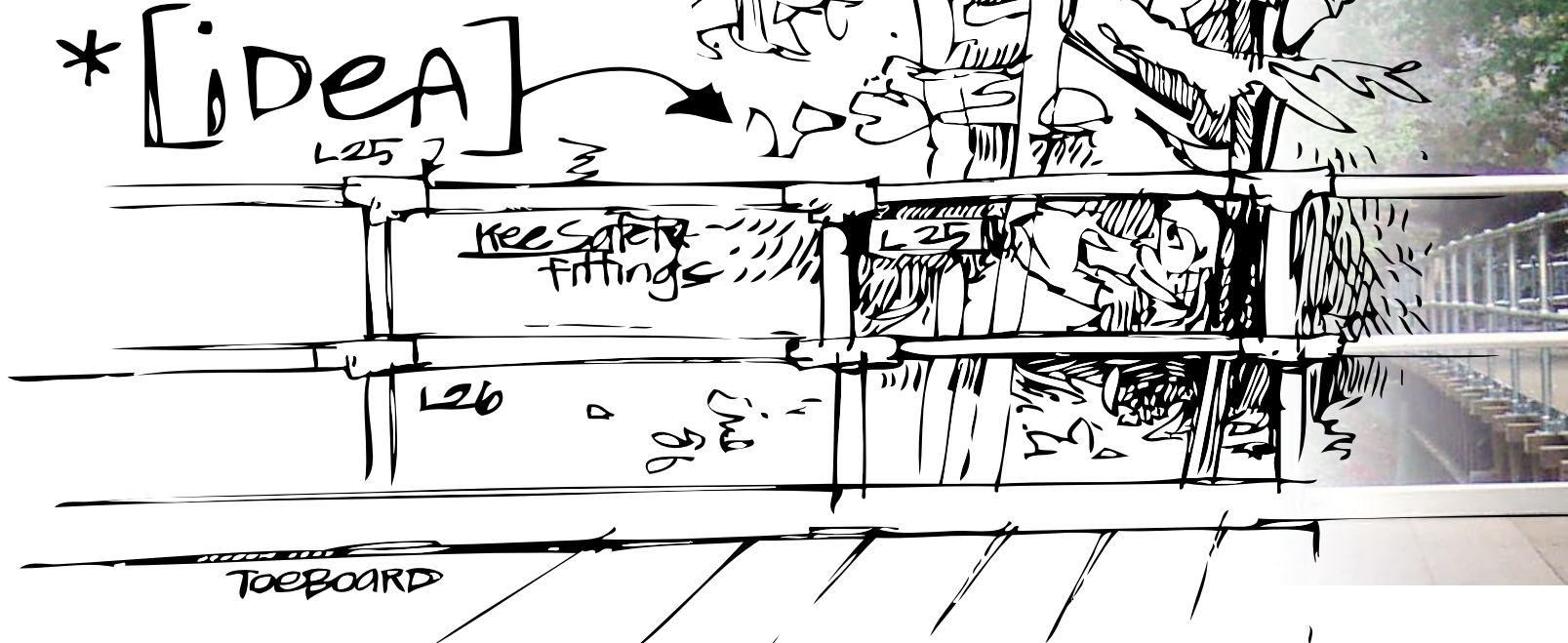


Architect Project Solutions

Our Kee® Projects group can provide solutions for the architect, designer, specifier, builder, or contractor. We can help with writing the specification or doing the layout of the safety barrier. We can provide a bill of materials for individual parts, sub-assemblies or provide the complete system; with installation, in certain parts of the country.

We can help an architect with their LEED Project Certification. Because our product is made from recycled material, we can assist you in achieving the MR-4 credit for Recycled Content. You can also reuse our products because the components and sub-assemblies are modular. This would help under the MR-3 credit for Material Reuse. We will be glad to provide more details when you give us a call.





Concept

The KEE SAFETY concept has been around since 1934 and has expanded from the original Kee Klamp product into a portfolio of safety equipment, all designed to save lives by separating people from hazards.

- Our unique hex set screws lock pipes and components
- Kee Koat® protects set screws from corrosion
- Vast array of components to suit any and all applications

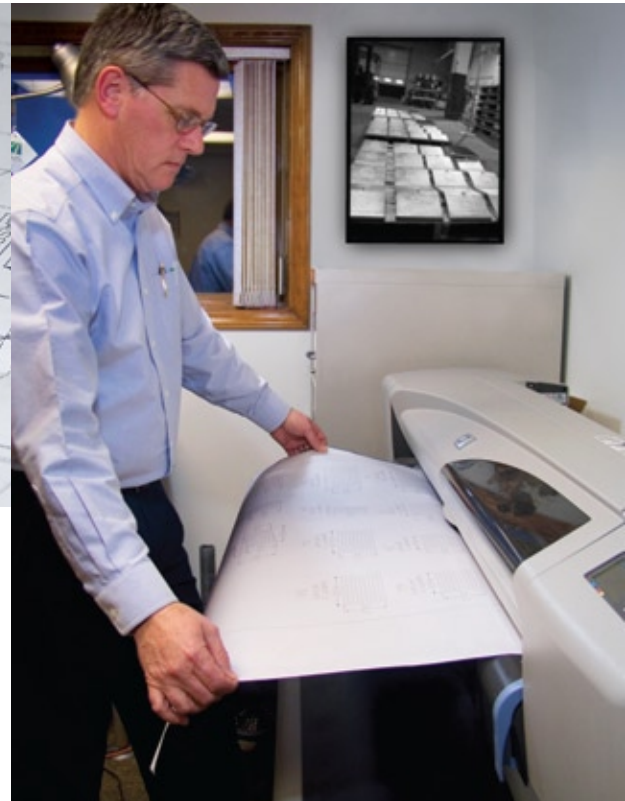
Design

Any project that requires a safety solution can be met. A customized design can be created using our safety barrier railing solutions.

- Created in accordance with OSHA and ICC guidelines
- Modular components allow for flexibility of design
- TÜV, Leading International Testing House, has approved many of our components



We at KEE SAFETY make your project a success. By working with you from start to finish, we can ensure all your safety needs and requirements are met. With these four key points, we are able to provide you with outstanding service and expertise.





to installation

Distribution

KEE SAFETY is a leading global supplier of components and custom designed systems for safety railings and barriers.

- Nationwide distribution network
- We work with a variety of transport companies to ensure your safety barrier system arrives via best route
- Delivery can be made directly to the site where it needs to be installed

Installation

Our safety barrier systems do not require any welding, making installation cost and time effective.

- Our team of experts can install your safety barrier system
- No need for hot permits
- Components can be reused and reassembled.
- No special tools or skills





Galvanized Safety Railing

- High corrosion resistance
- No welding or threading
- Galvanized for long lasting protection
- Recessed screws for a smooth look
- Quick installation
- Large set screws resists thread stripping
- Available for schedule 40 Pipe sizes 1 - 1/4" - 2"

durable galvanized finish requires no threading, welding or bolting to create pipe structures



Aluminum Safety Railing

- No welding or threading
- Lightweight and versatile
- High corrosion resistance
- Reduced labor costs
- Recessed set screws for a smooth finished look
- Cost effective alternative to welding
- Components and pipe can be powder coated in any RAL color

high grade aluminum silicon magnesium alloy provide lightweight, corrosion resistant structures



Kee Lite® components are made from high grade Aluminium Silicon Magnesium Alloy (A356-T6) which provide for a lightweight, corrosion resistant, and strong alternative for fabrication of tubular structures. Kee Lite components are only one-third the weight of our cast iron components, with about 75% of comparable tensile strength. The unique, and differentiating factors of the Kee Lite product line, are what make it stand out from the crowd.



barrier railing system designed to meet ADA (Americans with Disabilities Act) requirements



ADA Compatible Handrailing

- ADA Compliance is readily achievable
- Cost effective modular handrail system
- Easily assemble without specialized workers or equipment
- Components and railing are galvanized for low long-term maintenance
- Multiple base flange options
- Components and railing can be powder coated to any RAL color

The Kee Access® ADA Safety Railing is a cost effective answer to ADA, ICC and Building Code requirements. KEE SAFETY has a solution for every environment and situation. Ideal for creating new structures, this system can also be used as a retrofit solution. Current railings can be updated to be ADA compliant.



quick assembly safety railings available in straight, corner, and extension kits



Quick Installation Railing

- Preassembled uprights for quick installation
- Safety Yellow coating for high visibility
- Meets/exceeds OSHA and IBC standards
- 6 foot post spacing means lower system cost per foot
- Available in galvanized steel or aluminum
- Available in corner or straight sections
- Each kit covers 12 feet with 6 foot extension kits available

These railing kits are quick to assemble using a hex key to tighten the large, easy to use set screws. Kwik Kit® safety railing kits are pre-packaged with 6-foot post spacing for straight sections, corner sections or extension sections. By using a combination of Straight, Corner, or Extension Kits, almost any basic railing requirement can be fulfilled.

options

Pipe Choices

Galvanized Steel

Schedule 40 and Schedule 80; size 1/4" to 2" IPS; nominal mill lengths of 21' cut to your projects' exact length requirements

Powder Coating

Durable, corrosion preventing polyester coating applied to already galvanized/anodized products; available in any RAL color

Aluminum

Alloy 6105-T5 with an anodized finish; size range 3/4" to 2" IPS; nominal mill lengths of 12' and 24' cut to your projects' exact length requirements

Antimicrobial Coating

Defense against the growth of potentially harmful invisible bacteria and fungi; this powder coating can be applied in a wide range of RAL colors

Modules

Pre-assembled modules for a simple and quick assembly; provides a constant barrier height. Available in a variety of sizes and styles to suit individual project requirements



Toeboards

Our unique design does not require any drilling on site or in the shop. A slot on the back of the toeboard accepts a bolt head which prevents the bolt from spinning during assembly. Upright hardware and splice kits for corners and straight sections are also available. Toeboard comes in 24' lengths or can be custom cut.

In-fill Panels

Panels come in a variety of materials, sizes, and finishes. The standard 4" x 4" welded wired mesh is available in sizes up to 4' wide by 8' long. Smaller openings are available (2" x 2" or 1" x 1"). Material can be provided with a galvanized or powder coat finish, or in bare stainless steel. Virtually any custom configuration or material option is available.

Hi-Traction Covers

Improves footing and helps to prevent slips and falls. Suitable for indoor and outdoor use. Variety of grip options, colors, sizes, and materials. Glow-in-the-dark and custom printing available.

Grip Tape

Improves grip of existing handrail. Grip Tape has a glow-in-the-dark feature for added safety. Yellow and black coloring is also available.

pipe reference	component inner dia (in.)	nominal bore (in.)	pipe outer dia (in.)	tube outer dia (in.)
2	0.59	0.25	.54	0.531
3	0.76	0.375	.68	0.688
4	0.87	0.5	.84	0.844
5	1.09	0.75	1.05	1
6	1.38	1	1.32	1.313
7	1.72	1.25	1.66	1.625
8	1.94	1.5	1.9	1.875
9	2.41	2	2.38	2.375

2

3

4

5

6

7

8

9

providing design, installation,
and management of compliant
safety barrier systems



**Cost Estimates Specific to
Project Needs**

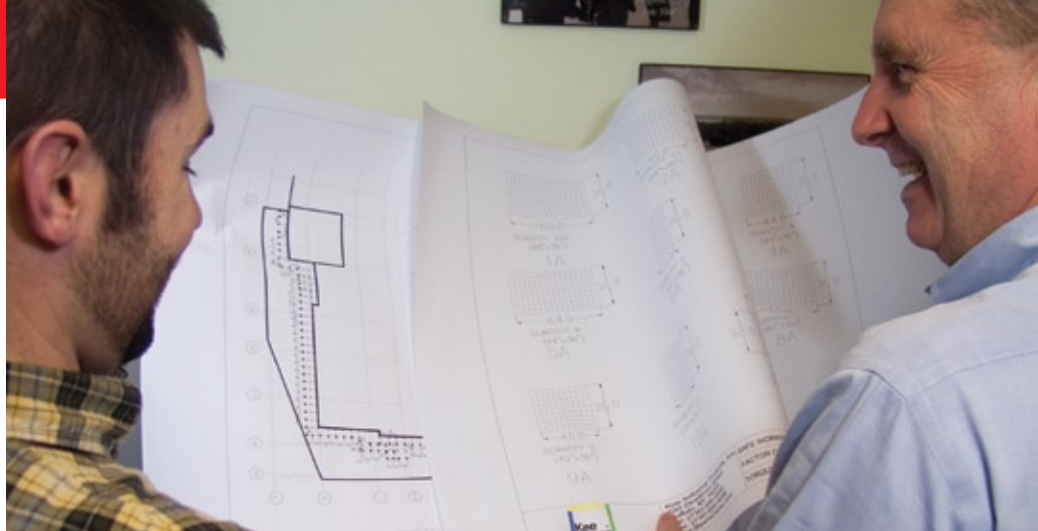
**Technical Advice and
Solutions Support**

Site Inspection Service

Design Solutions in CAD

**Installation Services to
Meet Your Site Deadlines**

**Advice on Building Codes
and OSHA Regulations**



Turn Key Safety Solutions

We at KEE SAFETY have dedicated construction professionals who have worked within the construction industry for many years. Together with their expert industry knowledge and our safety product ranges, our team is fully capable of providing you with safety guardrail and handrail solutions that will service your project needs.

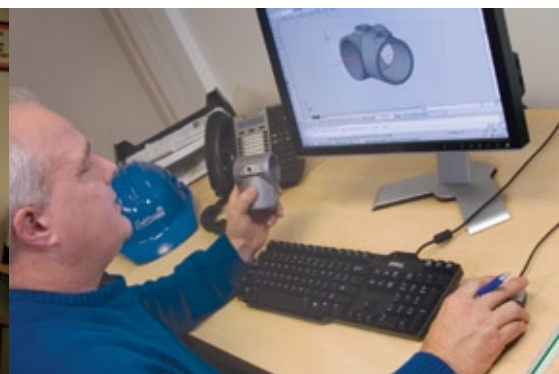
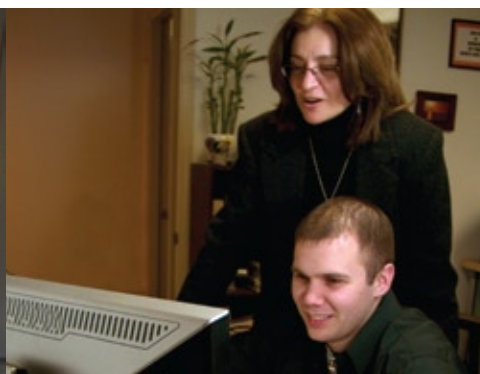
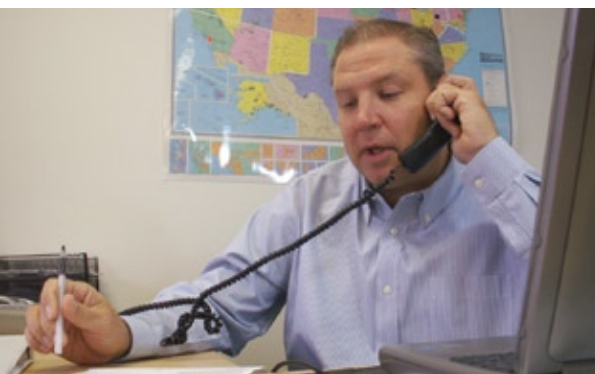
Whether dealing with new, refurbishment or upgrading of existing structures and developments, we can provide safety compliant guardrail and handrail designs, whether it be internal, external, at ground level, or roof level.

We can also advise you on project costs, manage completion time scales from inception to meet your site requirements, and also ensure compliance of our systems with current North American Legislation and Safety requirements.

Custom Services

Our dedicated technical service team can provide advice and solutions. We have CAD facilities and design software to enable us to interpret your design requirements and provide you with a solution.

We can visit the location to execute a full inspection including a measuring service so that the correct information is gathered. Further more we are able to provide a full installation service to assist in meeting any deadlines and site needs. Our installation teams are professional and excel in the assembly of our safety systems.

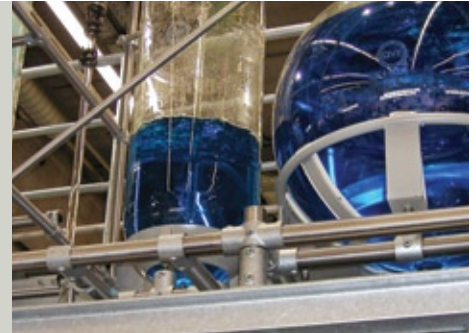




Left:
ADA Compliant Railing for
Public Access



Right:
Industrial Process
Plant Structures



Above:
Warehouse and Manufacturing
Safety Screen



Left:
Waste Water Treatment
Safety Guardrail



Right:
ADA Compliant Railing
for Access Ramps



Simplified Building Concepts
PO Box 24291
Rochester, NY 14624

Toll Free: 1 (888) 527 2278
Tel: (585) 672 7312
Fax: (585) 672 7313

www.simplifiedbuilding.com
Email: info@simplifiedbuilding.com

Kee Klamp, Kee Lite, Kee Stainless, KeeGuard, Kee Dome, Kee Hatch, Kee Mark, Kee Access, KwikKit and Kee Projects are all registered trademarks of Kee Safety Ltd. Beam Clamp, and Box Bolt are all registered trademarks of Access Technologies Ltd, a subsidiary of Kee Safety International Ltd. While every effort has been made to ensure the accuracy of the information contained in this brochure, Kee Safety, Inc cannot be held responsible for any errors or omissions. Kee Safety, Inc reserves the right to alter or withdraw products without prior notice. Kee Safety, Inc does not accept responsibility for any loss or damage arising from improper use of its products.
Copyright 2008 Kee Safety, Inc. All Rights Reserved.